



OK-TETA

GENERAL SURGERY TABLES



OK-TETA

General surgery tables



OK-TETA is an electromechanical table. Mobile, easy to move inside the operating room due to swivel castors.

OK-TETA is general surgery table which designed for positioning and providing optimal positioning of the patient during operations in general surgery, as well as for specialised operations with the use of additional sets of accessories (KPP).

In the table base there is an electric drive that controls all panel movements: lifting-lowering, lateral tilt left-right, Trendelenburg, reverse-Trendelenburg. The table panel positions are transformed by remote control.

The table has an emergency stop function.

Features:

- All open metal surfaces and additional accessories are made of stainless steel
- Universal side rails 10x25 mm for additional accessories
- Removable, antistatic, seamless, molded polyurethane foam mattresses made with antibacterial ASP technology (Ultra Fresh)
- Longitudinal shift provides full X-ray translucence of the table top C-Arm compatible
- "Zero position" of the table top with possibility of an emergency stop
- Head and leg sections are removable
- Extensible supports to fix the table
- Hand remote control with batteries charge indicator



OK-TETA

General surgery tables



Specifications



Safety table weight capacity (including additional accessories):

| | |
|--|-----|
| – no restrictions on table functions, kg | 220 |
| – with restricted table functions, kg* | 270 |

Table height (without mattresses):

| | |
|---------------------------------|------|
| in the lowest position, mm, max | 690 |
| in the highest position, min | 1100 |

| | |
|---------------------------------------|---------|
| Table top length (including pads), mm | 2100±50 |
|---------------------------------------|---------|

| | |
|---|-----|
| Table top width (including pads), mm, min | 500 |
|---|-----|

| | |
|--|-----|
| Table width (including rails), mm, min | 550 |
|--|-----|

| | |
|---|-------|
| Rail section for mounting removable accessories, mm | 25x10 |
|---|-------|

| | |
|------------------------------------|---|
| Number of table sections, pcs, min | 5 |
|------------------------------------|---|

Lift, longitudinal tilt and lateral tilt, dorsal
section tilt actuator

Electromechanical

Leg and head section tilt actuator

Gas springs

| | |
|---|----------|
| Trendelenburg tilt of the table top, NLT: | 30° ± 1° |
|---|----------|

| | |
|--|----------|
| Reverse Trendelenburg tilt of the table top, NLT | 30° ± 1° |
|--|----------|

Lateral tilt of the table top, NLT:

| | |
|-------|-----|
| right | 20° |
|-------|-----|

| | |
|------|-----|
| left | 20° |
|------|-----|

Head section tilt, NLT:

| | |
|----|-----|
| up | 30° |
|----|-----|

| | |
|------|-----|
| down | 35° |
|------|-----|

Dorsal section tilts, not less:

| | |
|----|-----|
| up | 70° |
|----|-----|

| | |
|------|-----|
| down | 40° |
|------|-----|

Leg section tilt, NLT:

| | |
|----|-----|
| up | 30° |
|----|-----|

| | |
|---|-----|
| down (at the topmost position of the table top) | 90° |
|---|-----|

OK-TETA

General surgery tables



Specifications

| | |
|---|-------------|
| Maximum head section extension, mm, NLT | 50 |
| A longitudinal shift of the table top, mm, | 320-10 |
| Pad lift at dorsal section bend, mm, NLT (optional) | 105 |
| Longitudinal shift of the table top, mm | Removable |
| Table weight with pads (without a set of removable accessories), kg, NMT | 250 |
| Supply voltage of the table | ~230V, 50Hz |
| Powered by built-in rechargeable batteries | 24V |
| Battery charging time | 24 hours |
| Mains battery charging | ~230V, 50Hz |
| Power consumption, NMT | 450 VA |

*Without using:

- longitudinal and lateral tilts of the table top;
- tilts of the removable table top sections;

* With a max longitudinal shift of the table top towards the legs.

* Taking into account the patient's weight and accessories.



OK-TETA

General surgery tables



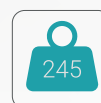
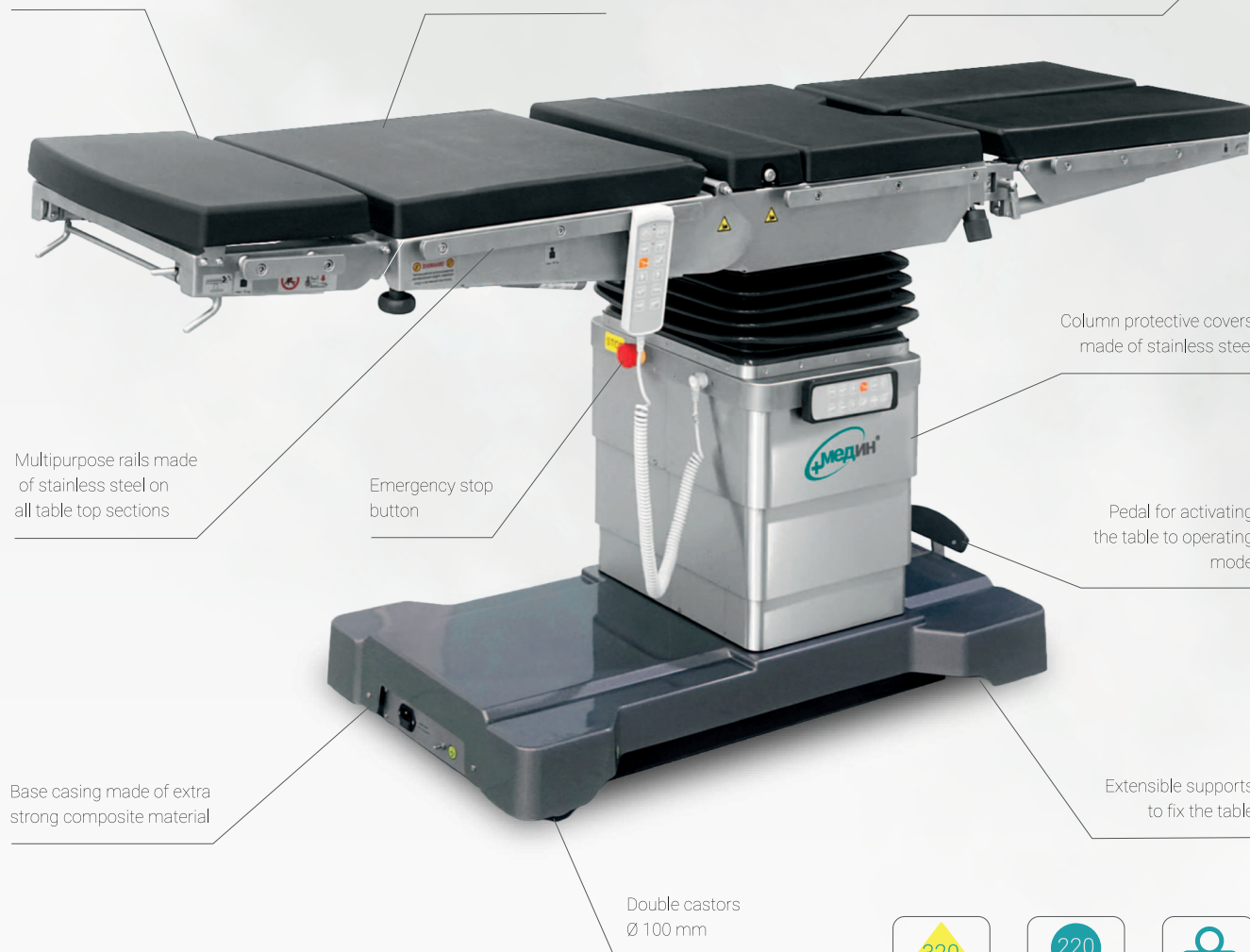
- New generation of high-functioning electromechanical tables for all types of surgical procedures



Head section with dual tilt function

Dorsal section bending (OK-TETA-01)

Molded polyurethane foam cushions. Made of latex-free, fire-resistant, antistatic material



Used with the following KPP sets:

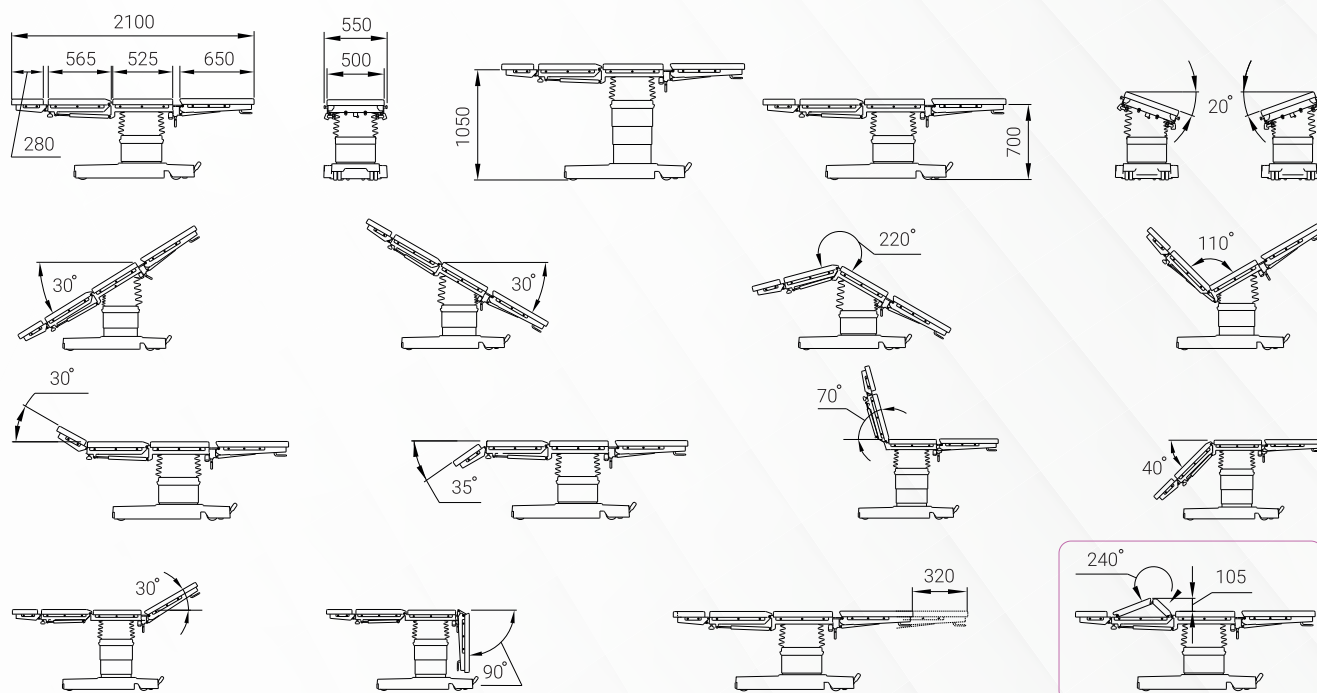
01 02 03 04 05 06 07 08 09 10 11 12 13 14 15 16 17 18 19 20 21 22 23 24 25 26 27 28 29 30 31 32 33 34 35 36 37 38 39 40 41 42 43

OK-TETA

General surgery tables



| Functions | OK-TETA | OK-TETA-01 |
|------------------------------|---------|------------|
| Table top height | | |
| Table top lateral tilts | | |
| Table top longitudinal tilts | | |
| Table top zero position | | |
| Table top longitudinal shift | | |
| Dorsal section tilts | | |
| Head section tilts | | |
| Leg section tilts | | |
| Dorsal section bending | NO | |
| Extensible support shift | | |

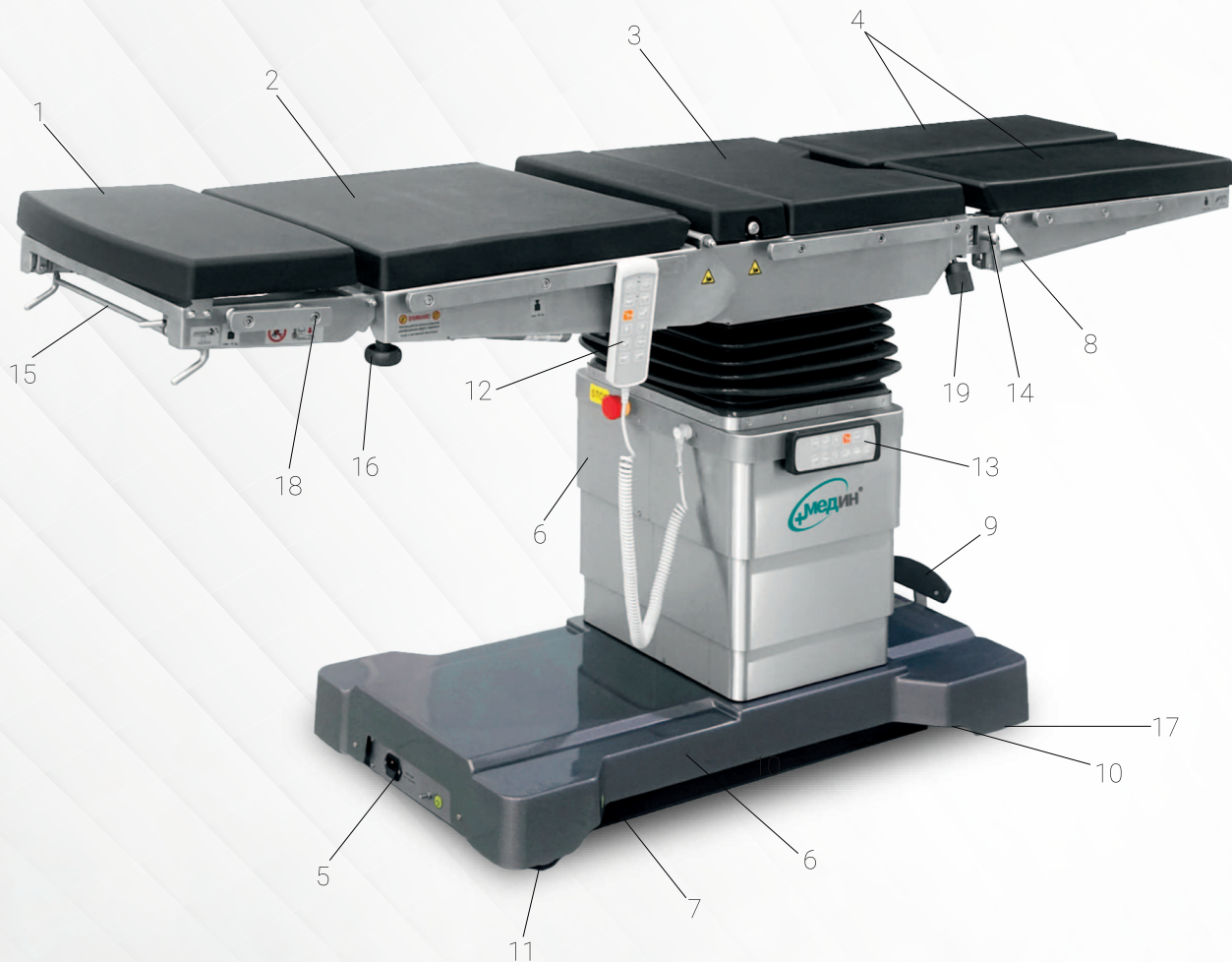


OK-TETA

General surgery tables



Product Components and Units

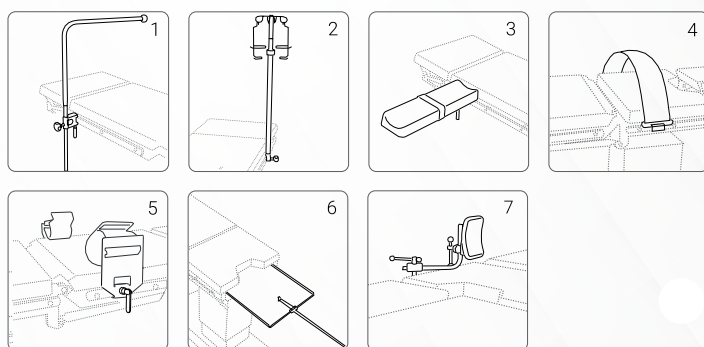
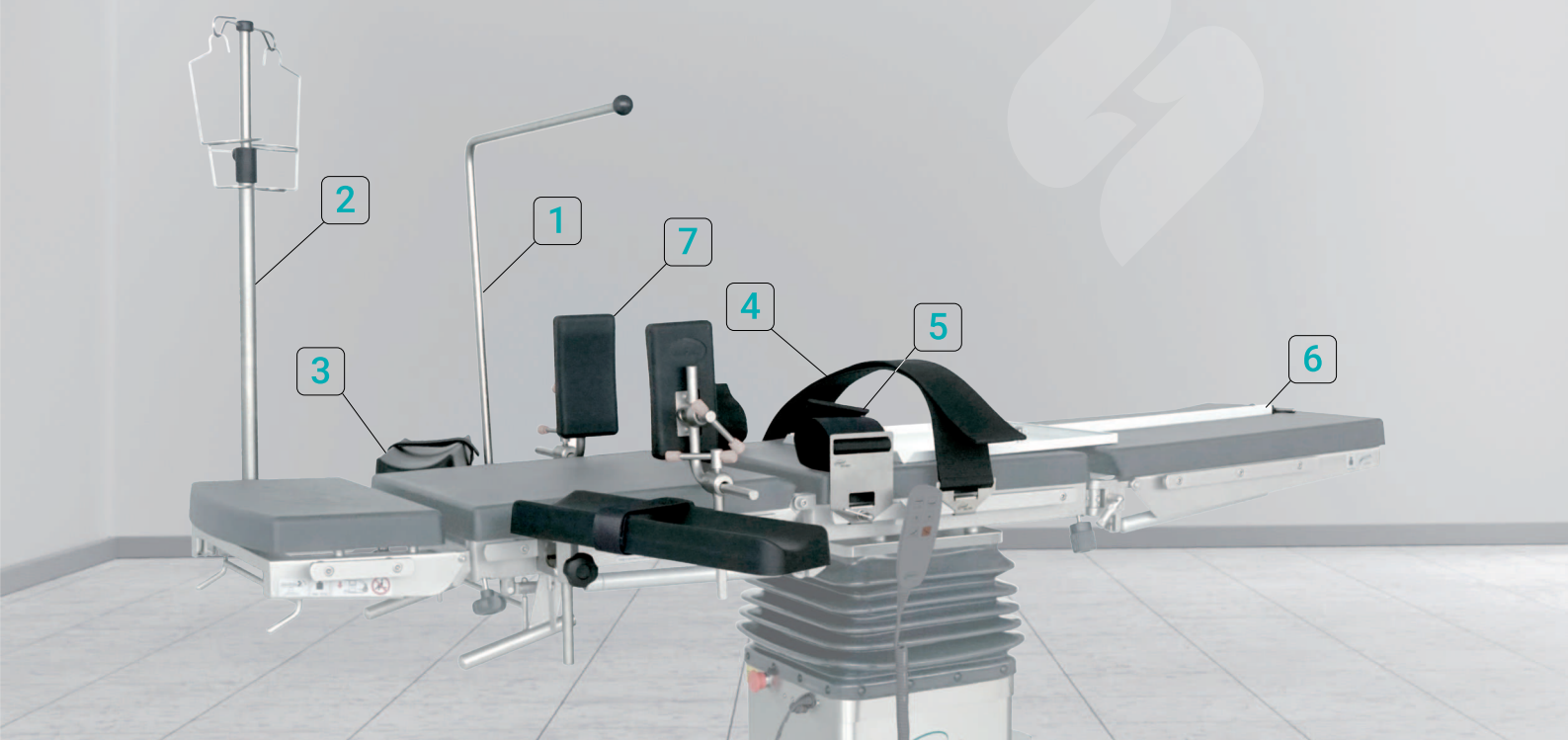


- 1 - Head section, 2 - Dorsal section, 3 - Hip section, 4 - Leg section, 5 - Power panel,
6 - Guide column, 7 - Base frame, 8 - Gas springs
9 - Foot pedal for placing the table on the supports, 10 - Swivel casters,
11 - Rigid casters, 12 - Remote control, 13 - Stationary control panel,
14 - Leg section swivel joint, 15 - Head section tilt handle, 16 - Head section lock,
17 - Adjustable supports of the frame, 18 - Side guides for accessory installation,
19 - Leg section lock



KPP-01

Set of additional accessories for general surgery



KPP-01 set includes the following:

- | | |
|---|--------|
| 1. Anesthetic screen | 1 pc. |
| 2. Medical stand for infusions (SHDV-5) | 1 pc. |
| 3. Injection plate | 2 pcs. |
| 4. Patient restraint strap | 1 pc. |
| 5. Hand strap | 2 pcs. |
| 6. X-ray cassette holder | 1 pc. |
| 7. Lateral support | 2 pcs |